



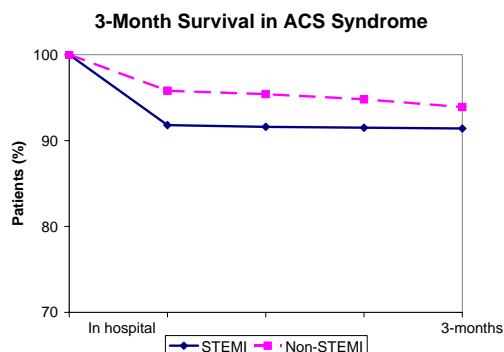
AMIS Plus Newsletter Nr. 15 – November 2005

Dear Current, Potential AMIS Plus Participants & Sponsors

We hope you all had a good summer and are now enjoying the changing colours of autumn.

Follow-up

The results of the first 400 patients who took part in the 3-month follow-up are available. Of these ACS patients, 12.2% were rehospitalized, reinfarction occurred in 2.3% and the mortality rate for this period was 1.0%. The results of the 3-month follow-up are now accessible online at "AMIS Plus Data Analysis" (Web App) for viewing or downloading by participating hospitals using their personal login.



AMIS Plus at the ESC Congress in Stockholm

Four abstracts from AMIS Plus were presented at the ESC Congress from 3-7 September 2005 in Stockholm and can be downloaded from our website www.amis-plus.ch:

Association between the type of reperfusion strategy and in-hospital mortality in female patients admitted with acute coronary syndromes in Switzerland from 1997-2004. Radovanovic D, Erne P, Urban P, Bertel O, Rickli H, Gaspoz J-M for the AMIS Plus Investigators. (Oral Presentation)

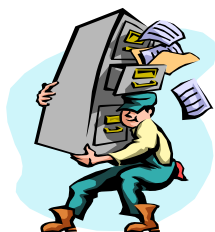
In-hospital mortality for AMI in Switzerland: is outcome related to admission during routine duty hours versus off-hours? Stauffer J-C, Radovanovic D, Taskin A, Urban P, Maggiorini M, Bertel O, Erne P. (Moderated Poster)

Glycoprotein IIb/IIIa antagonists: what is their real impact on MACE rate and mortality in acute coronary syndromes? Stauffer J-C, Radovanovic D, Urban P, Maggiorini M, Bertel O, Erne P. (Poster)

Incidence and prognostic significance of atrial fibrillation in patients admitted with acute coronary syndrome. Fassa A, Urban P, Radovanovic D, Stauffer J-C, Bertel O, Erne P for the AMIS Plus Investigators. (Poster)

AMIS Plus Data Center moves office

The AMIS Plus Data Center has moved office.



Our new address is:

AMIS Plus Data Center
Institute of Social & Preventive Medicine
University of Zurich
Hirschengraben 84
8001 Zurich

If you have any questions or suggestions please do not hesitate to contact us here at the Data Center by telephone, email or fax.

Sincerely yours

For the Steering Committee

Prof. Paul Erne, MD
President

For the Data Center

Dragana Radovanovic, MD
Executive Manager